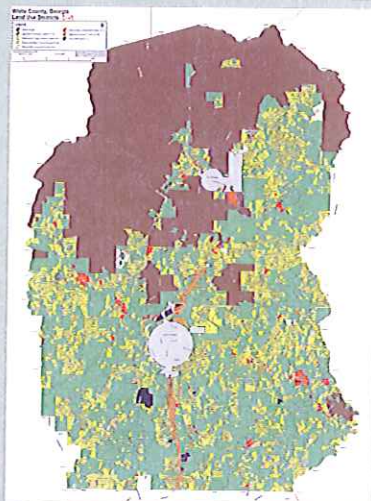


WHITE COUNTY LAND USE REGULATION

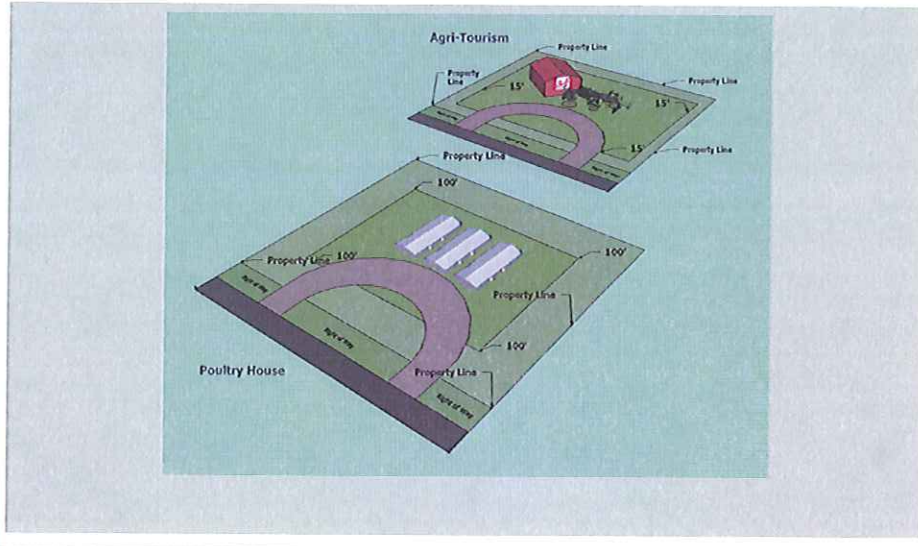


WHITE COUNTY LAND USE REGULATION

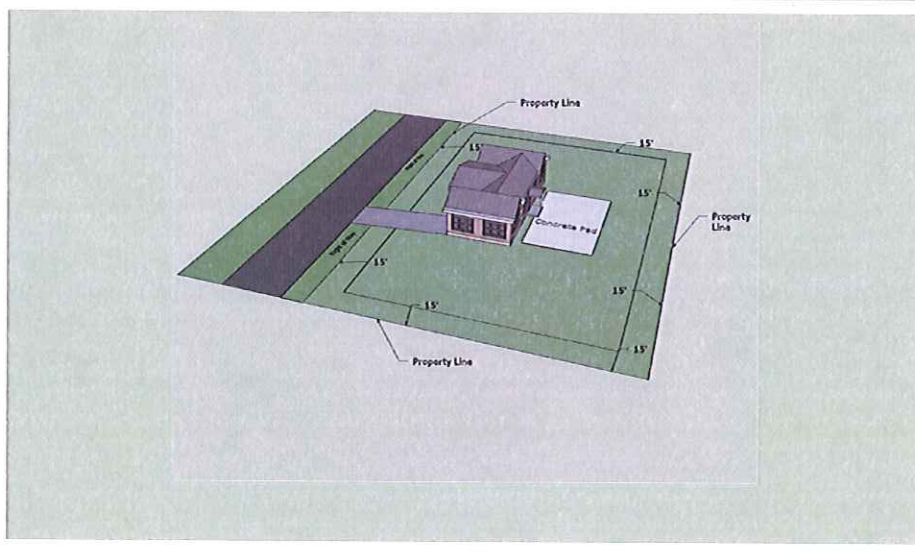
■ Standard Districts based on Current Land Use

- Agriculture Forestry District (A)
- Residential, Single Family District (R-1)
- Residential, Multi-family District (R-2)
- Seasonal Residential District (R-3)
- Community Commercial District (C-1)
- Highway Business District (C-2)
- Industrial District (I)
- Planned Development District (PD)

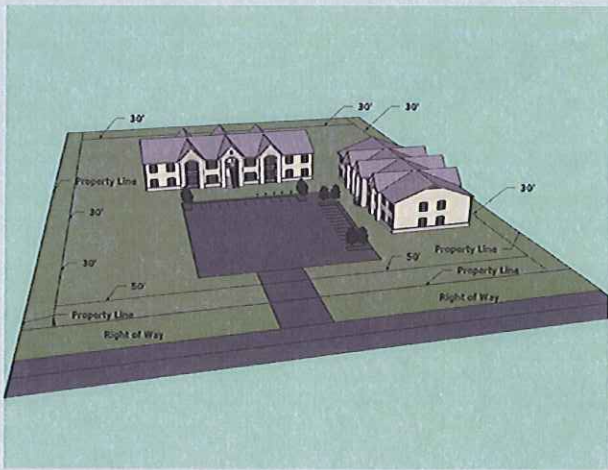
AGRICULTURE FORESTRY DISTRICT



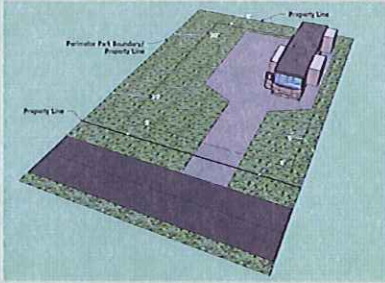
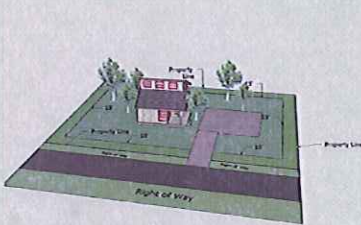
RESIDENTIAL SINGLE FAMILY DISTRICT



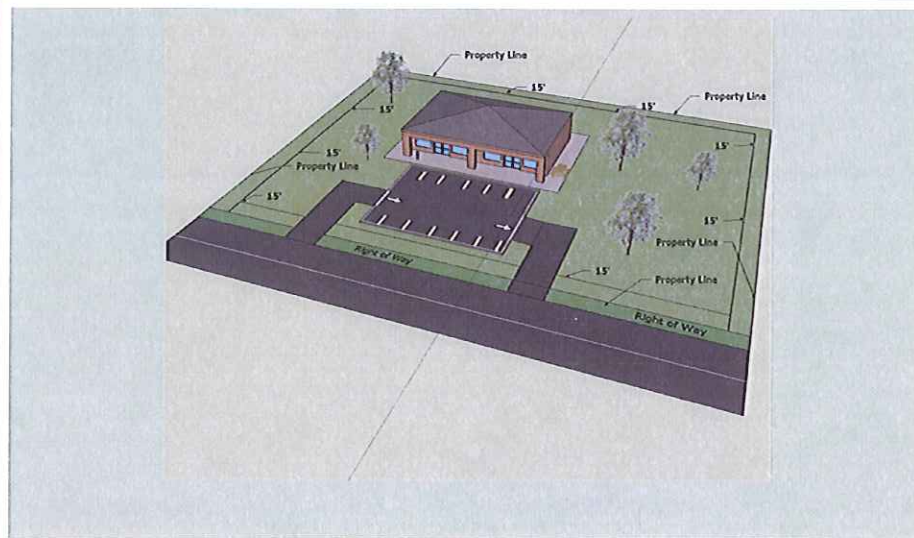
RESIDENTIAL MULTI-FAMILY DISTRICT



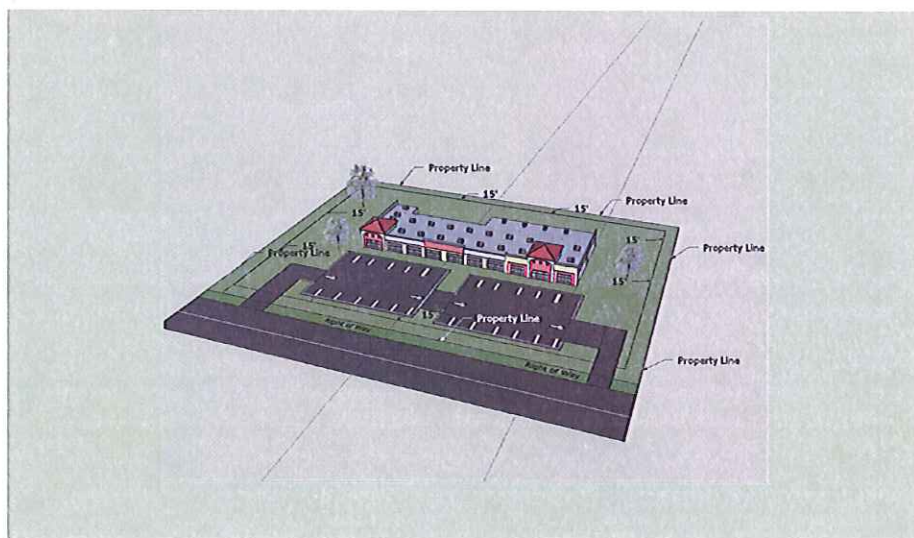
SEASONAL RESIDENTIAL DISTRICT

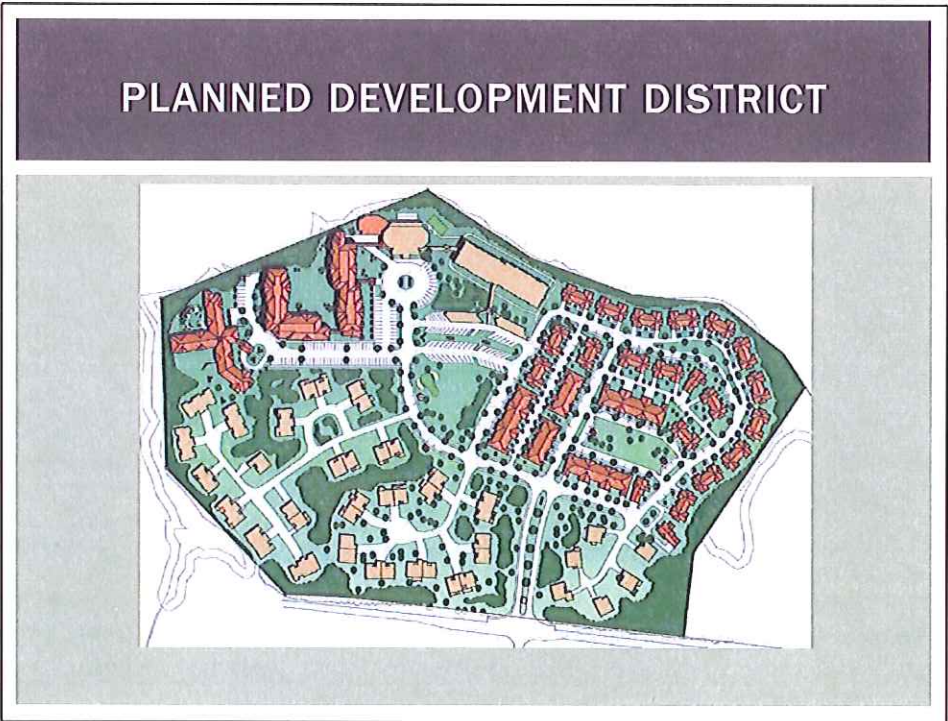
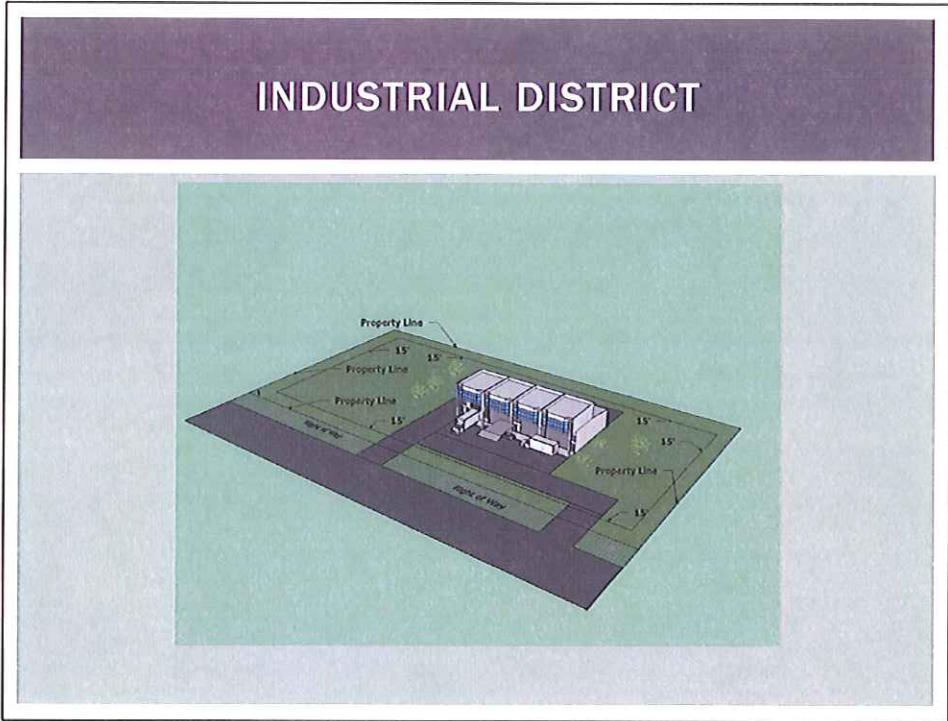


COMMUNITY COMMERCIAL DISTRICT



HIGHWAY BUSINESS DISTRICT





ORDINANCE ADMINISTRATION

- Application, Staff Review
- Planning Commission Recommendation
- Board of Commissioners Decision

- State Zoning Procedures
 - Notice
 - Standards for Consideration
 - Conduct of Hearings

WHITE COUNTY LAND USE REGULATIONS

Submit Comments to:

Tom O'Bryant

White County Community Development

tobryant@whitecounty.net

(706) 865-6768