

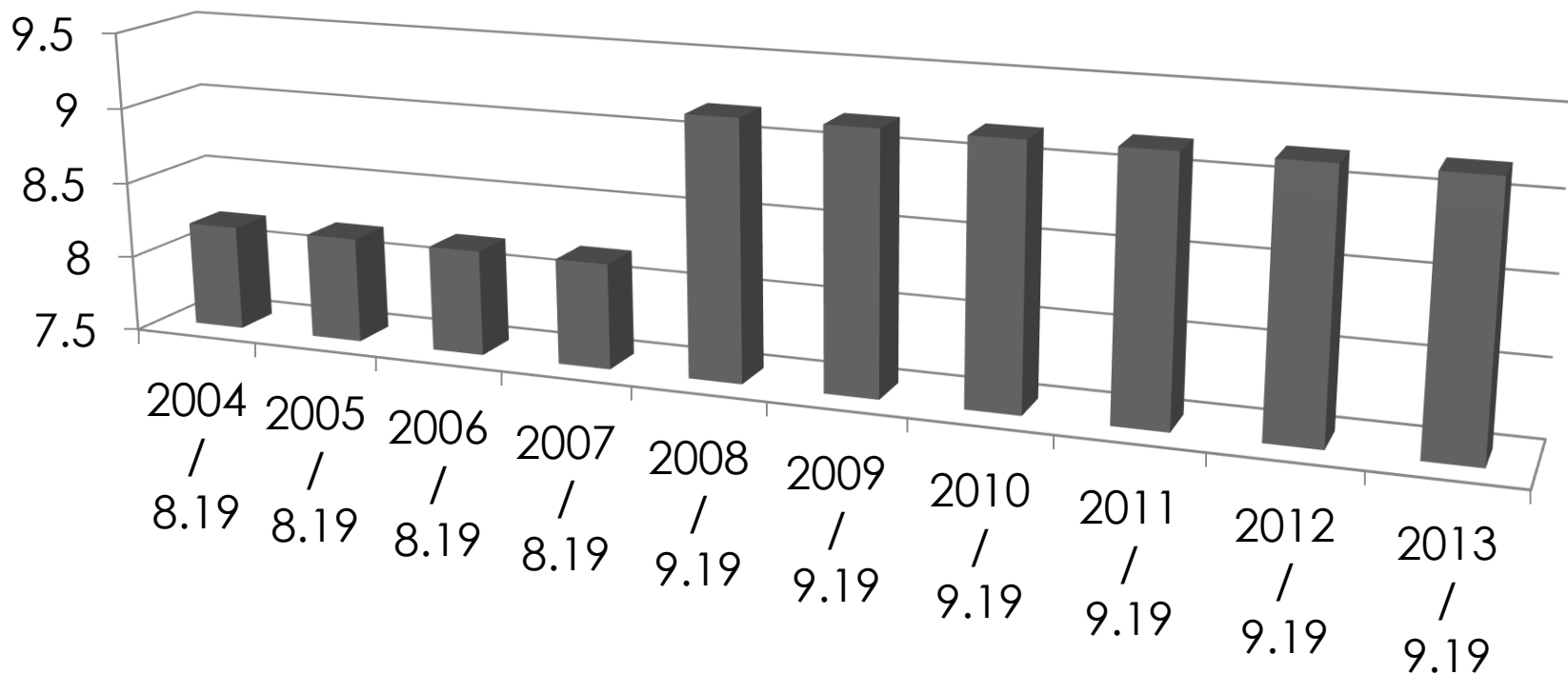
# **White County Board of Commissioners**

**Tax Year 2013  
Millage Rate  
Public Presentation  
July 26, 2013 8:00am**

# What is the -- Millage Rate

- The millage rate (also known as the tax rate) is a figure applied to the value of your property to calculate your property tax liability. One “mill” equals one dollar of tax on every thousand dollars of taxable value. Your tax dollars are used to fund the cost of your government each year.
- The White County Assessors office determines the fair market value of property, which is then taxed 40% of the value.
- The Tax Commissioner takes the information, applies the millage set by the governing authority, bills and collects taxes.

# White County's Millage Rates 10 Year History County Portion Only



# Taxes Levied on Real Estate & Personal Property Only

<u>Component</u>	<u>Mills</u>	<u>% Collections</u>	<u>Collections</u>
<u>County</u> (only portion controlled by BOC)	.00919	31.8%	\$ 6,991,850
<u>State</u>	.00015	0.6%	\$ 104,952
<u>School</u> (set by school board/adopted by BOC)	.017523	67.6%	\$14,840,235
<u>Totals</u>	<u>.026863</u>	<u>100%</u>	<u>\$21,937,037</u>

# Where's the Money Used

<u>Services</u>	<u>Budget %</u>	<u>Millage %</u>
Agriculture	.27	.025
Judicial	9.18	.844
Culture & Recreation	5.48	.504
Housing & Development	2.08	.191
General Government	21.27	1.954
Health & Welfare	3.73	.343
Public Safety	48.91	4.494
Public Works	9.09	.835
<b>TOTAL</b>	<b>100%</b>	<b>9.19%</b>

**Example:**  
**Impact on Average Homeowner**  
**(County Portion Only)**

<b>Value of Home</b>	<b>\$300,000</b>	<b>\$500,000</b>
<b>40%</b>	<b>\$120,000</b>	<b>\$200,000</b>
<b>Rate</b>	<b>9.19</b>	<b>9.19</b>
<b>County Tax</b>	<b>\$1102.80</b>	<b>\$1838.00</b>

**Allocation of Tax Dollars**  
**(on \$300,000 home /40% value = \$120,000)**

<b>Year</b>	<b>(.00015) State</b>	<b>(.00919) County</b>	<b>(.017523) School Board</b>	<b>Total</b>
<b>2013</b>	<b>\$18.00</b>	<b>\$1,102.80</b>	<b>\$2,102.76</b>	<b>\$3,223.56</b>

# July 11, 2013

## White County News Ad

### CURRENT 2013 TAX DIGEST AND 5-YEAR HISTORY OF LEVY VALUES

	2008	2009	2010	2011	2012	2013
Real & Personal	1,119,240,341	1,136,123,039	1,134,171,869	1,068,166,322	938,603,110	895,428,420
Motor Vehicles	72,679,790	75,182,540	65,118,850	64,311,540	65,922,000	65,322,610
Mobile Homes	9,448,848	9,148,573	8,773,389	7,583,597	6,544,189	65,785,220
Timber-100%	57,121	17,901	16,526	6,248	90,647	27,642
Heavy Duty Equip.	41,778	0	0	0	0	0
Gross Digest	1,201,467,878	1,220,472,053	1,208,080,634	1,140,067,707	1,021,159,946	970,563,892
Less M&O Exemptions	163,467,865	177,299,388	183,561,778	168,903,466	141,627,308	134,617,898
Net M&O Digest	1,038,000,013	1,043,172,665	1,024,518,856	971,164,241	879,532,638	835,945,994
Gross M&O Millage	0.01119	0.01099	0.01103	0.01121	0.01152	0.01291
Less Rollbacks	0.00200	0.00180	0.00184	0.00202	0.00233	0.00372
Net M&O Millage	0.00919	0.00919	0.00919	0.00919	0.00919	0.00919
Net Taxes Levied	\$9,539,220	\$9,588,843	\$9,415,328	\$8,924,999	\$8,082,905	\$7,682,344
Net Taxes \$ Inc	1,343,932	49,623	-173,515	-490,329	-842,094	-400,561
Net Taxes % Inc	16.399%	0.520%	-1.843%	-5.494%	-10.418%	-5.214%



# Millage Rate Recommendation

- Of the projected \$16,035,138 revenue for FY2014 General Fund, property tax will provide \$7,682,344 with the county's millage rate remaining at 9.19 mills.